

Order

Order the following from shortest to longest:

400 minutes

$\frac{1}{3}$ of a day $\rightarrow 8 \times 60 = 480$ minutes
 $\frac{1}{3}$ of 24 = 8 hours

$6 \times 60 = 360$ minutes

6 hours

18000 seconds

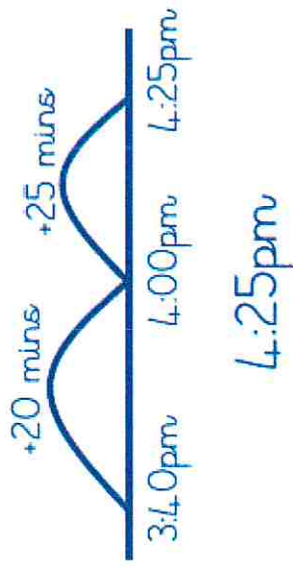
$18,000 \div 60 = 300$ minutes

Ordered: 18,000 seconds, 6 hours, 400 minutes, $\frac{1}{3}$ of a day.

Explain the mistakes

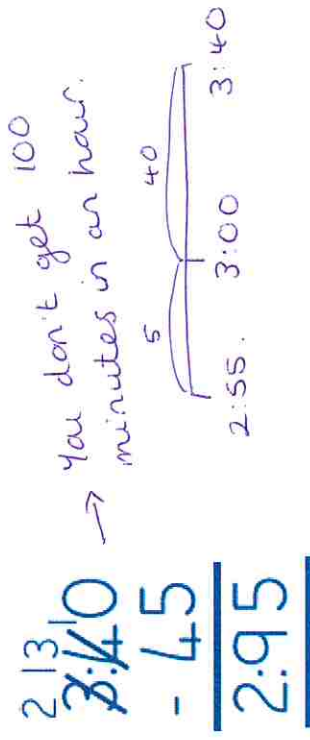
Tom arrived at the airport at 3:40pm. The drive to the airport took him $\frac{3}{4}$ hour. At what time did Tom set off?

Mistake 1



You leave before you arrive, so you need to count back, not forward.

Mistake 2



You don't get 100 minutes in an hour.