

Emma and Steph were asked how many degrees there are between North-West and South-West.

Emma said,



There are 90 degrees between NW and SW.

Steph said,



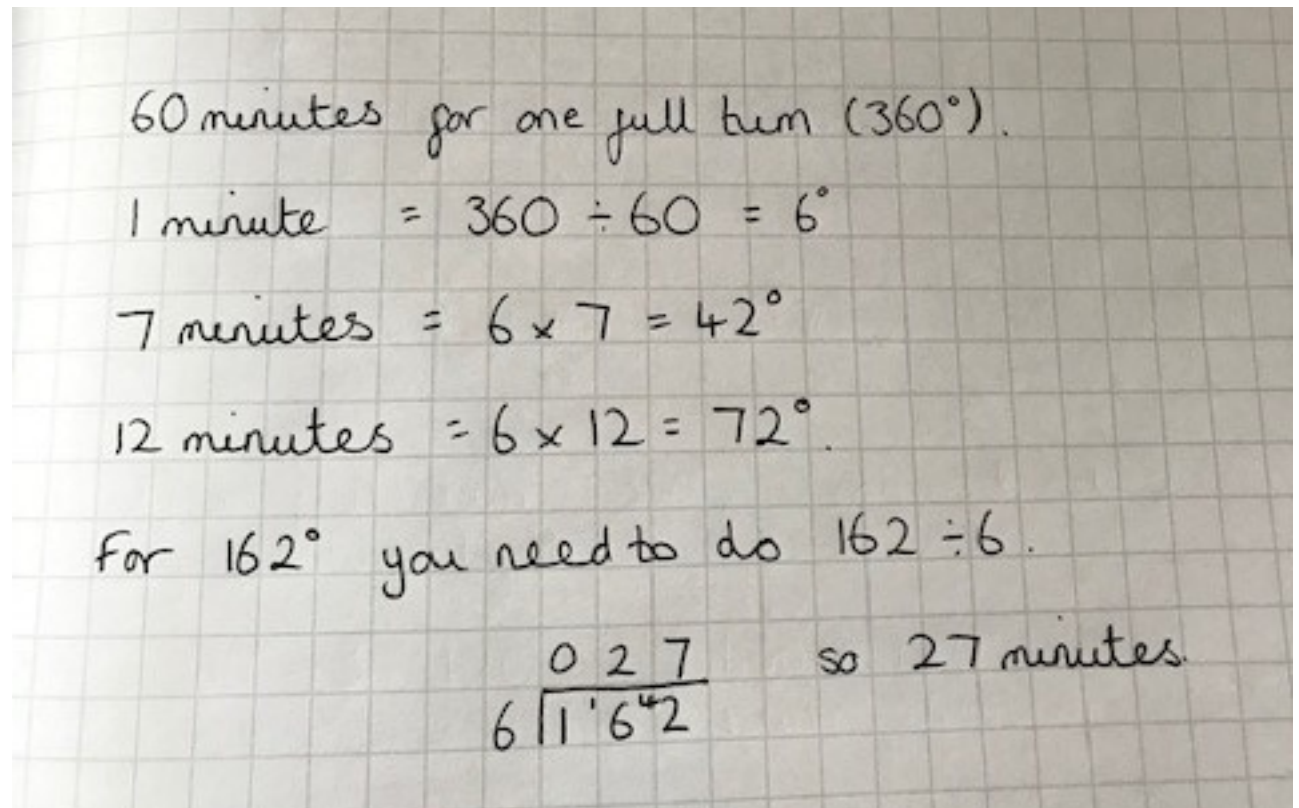
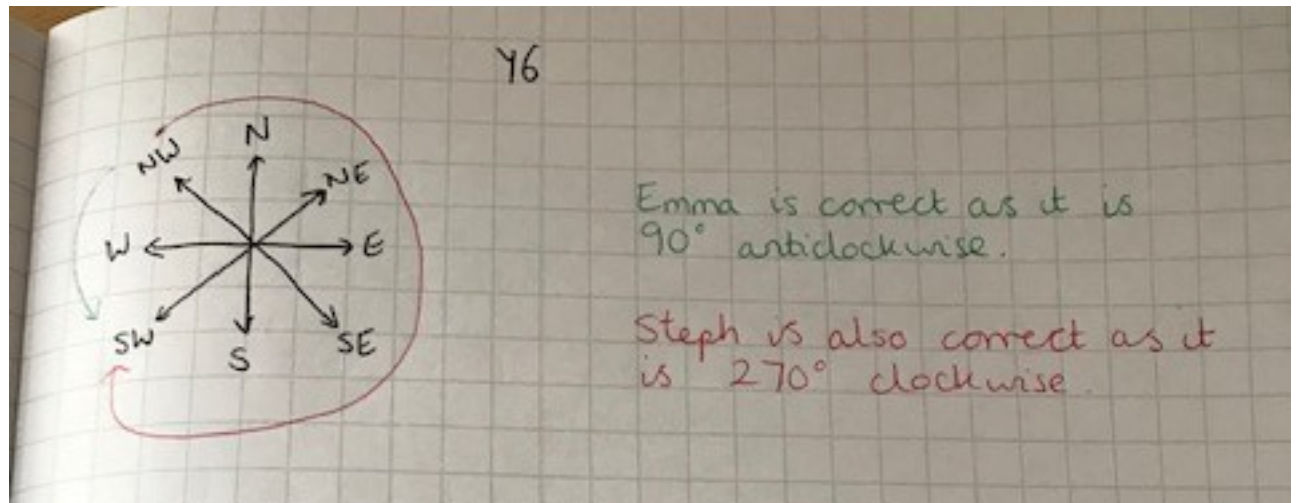
There are 270° between NW and SW.

Who do you agree with?
Explain why.

If it takes 60 minutes for the minute hand to travel all the way around the clock, how many degrees does the minute hand travel in:

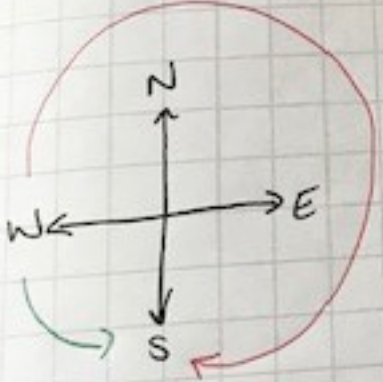
- 7 minutes
- 12 minutes

How many minutes have passed if the minute hand has moved 162°?




Always, sometimes, never.

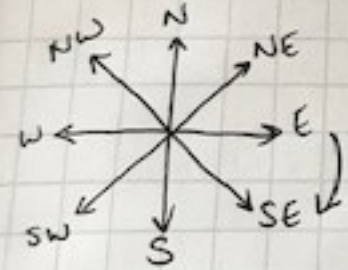
W to S = 90 degrees
NE to SW = 180 degrees
E to SE in a clockwise direction > 90°



Sometimes 90° anticlockwise
OR 270° clockwise



Always - it doesn't matter
if you go clockwise or
anti-clockwise.



If you go from E to SE in a
clockwise direction it is always
less than 90° . In fact, it is
 45° .