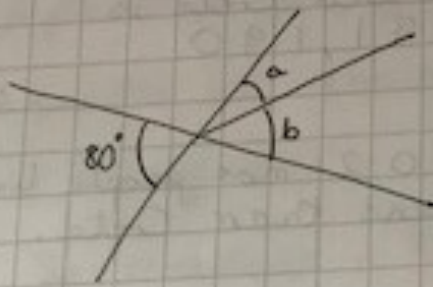
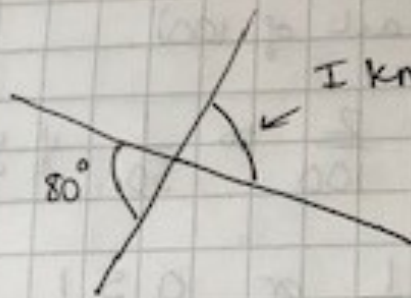


6.



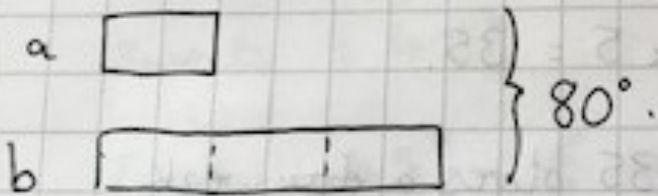
Imagine it like this



I know this is  $80^\circ$  as it is a vertically opposite angle.

This represents angles a and b.

b is three times the size of a



There are 4 equal parts.

$$80^\circ \div 4 = 20^\circ.$$

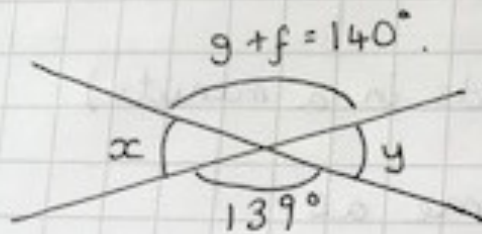
$$\text{angle } a = 20^\circ.$$

$$\text{angle } b = 3 \times 20^\circ = 60^\circ.$$

7.  $f$  is one quarter of  $g$ .  $f = 28^\circ$ .

$$g = 28^\circ \times 4 = 112^\circ.$$

$$\begin{array}{r} 28 \\ \times 4 \\ \hline 112 \\ \hline 3 \end{array}$$



$g+f = 140^\circ$  which is not the same as  $139^\circ$ .

So these angles are not vertically opposite and therefore, neither are  $x$  and  $y$ .