

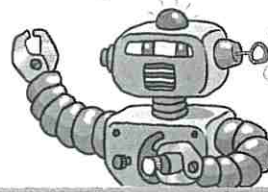
Inverted commas in direct speech

Remember

In **direct speech**, **inverted commas** (or speech marks) are used to show which words are spoken. The inverted commas go at the start and the end of the spoken words.

"My name is Mark 6," said the robot.

"That's a strange name," said Charlie.



Try it

- 1 Underline the spoken words in each sentence. Then add the missing **inverted commas**.

"I don't like sprouts," muttered Vicky.

"Nonsense, they are good for you," said Mum.

"But they are green and smelly," moaned Vicky.

"They are vegetables," replied Mum. "Of course they are green."

"I'm not going to eat them," insisted Vicky grumpily.

"We will see about that," said Mum firmly.

- 2 Rewrite these sentences with the **inverted commas** in the correct place.

I shall gobble you up, said the troll.

"I shall gobble you up," said the troll.

That's a lovely idea, said Mrs Haines.

"That's a lovely idea," said Mrs Haines.

I will visit my friend the snake, said the monkey.

"I will visit my friend the snake," said the monkey.