



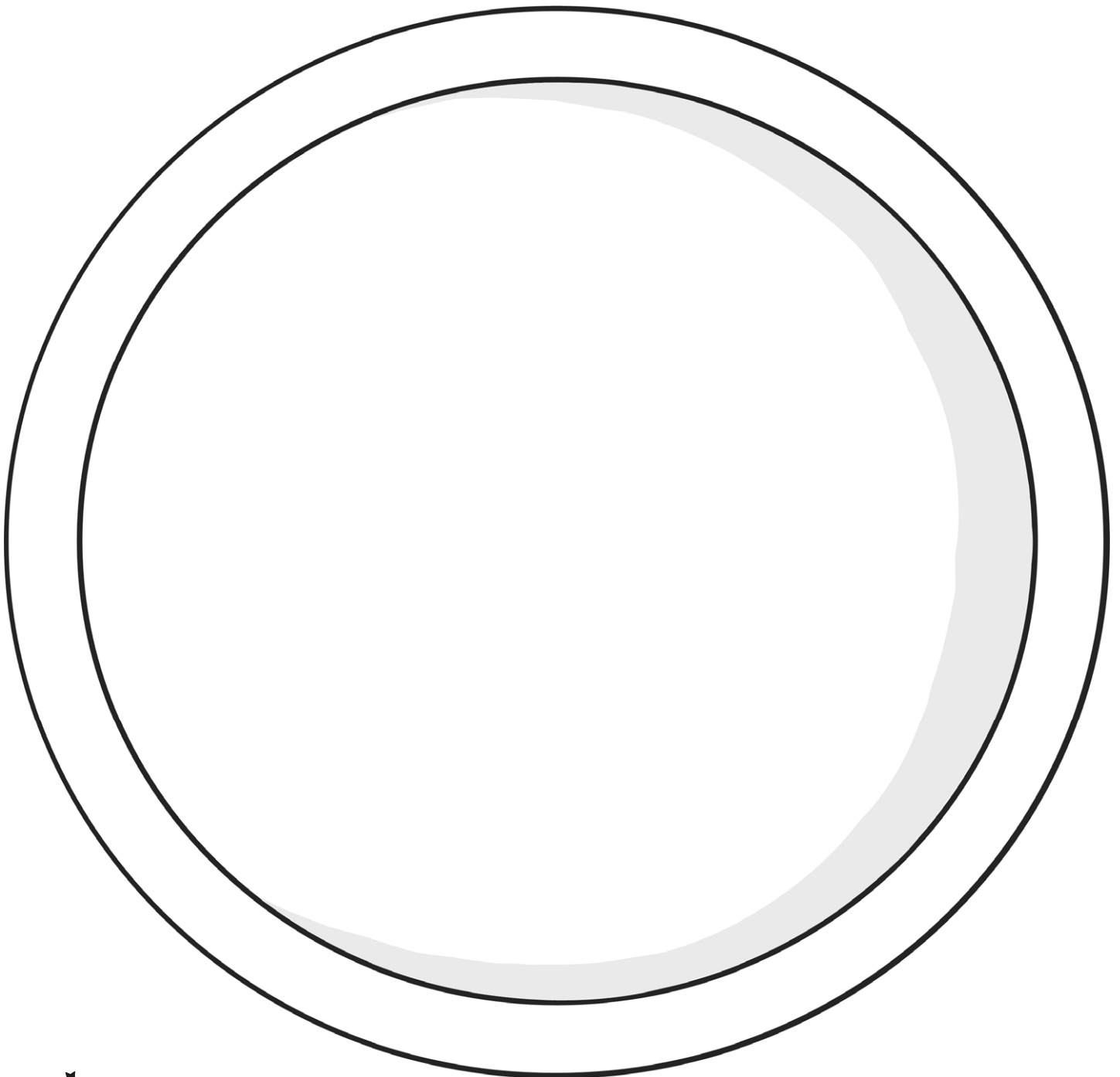
# Halving Hippo

I can find half of a number.



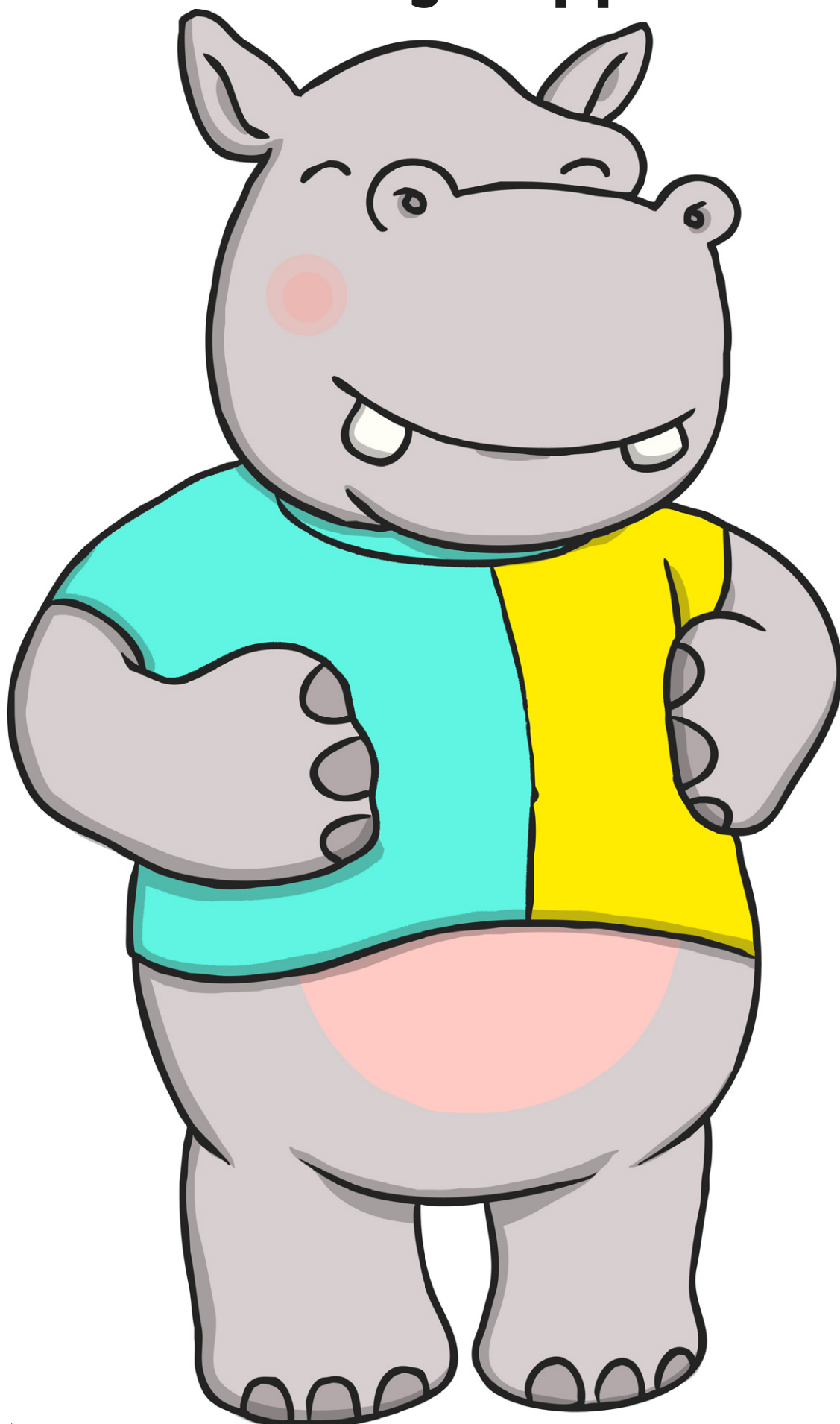
Halving Hippo eats half of everything he sees. Can you put half of everything in his tummy and the food that is left onto the plate?

What do you notice?



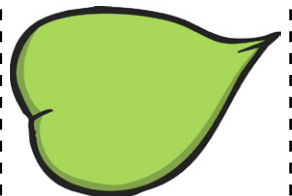
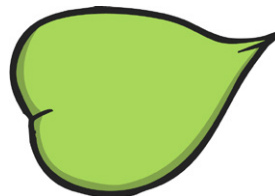
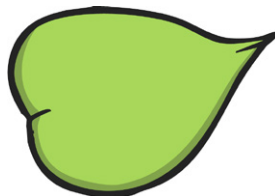
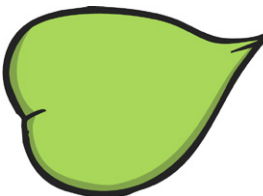
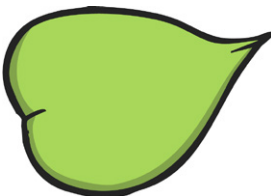
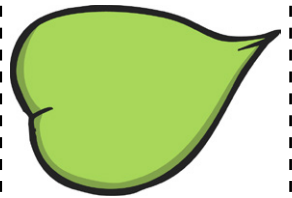
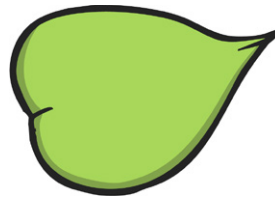
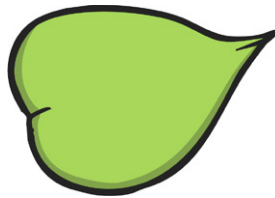
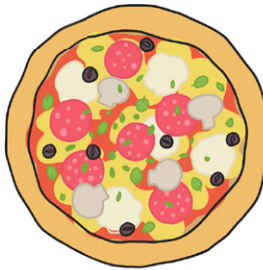
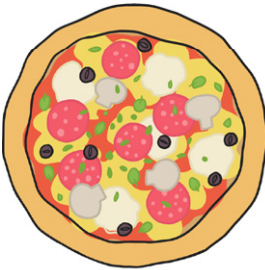
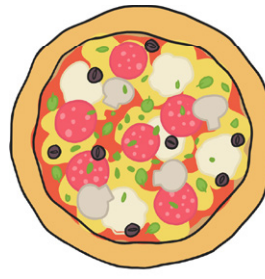
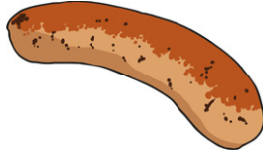
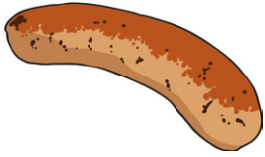


# Halving Hippo





# Halving Hippo





# Halving Hippo

I can find half of a number.



Halving Hippo eats half of the flowers. Explore different numbers of flowers. How many will he eat and how many will be left on the plant?

Try      1      2      3      4      5      6      7      8      9      10

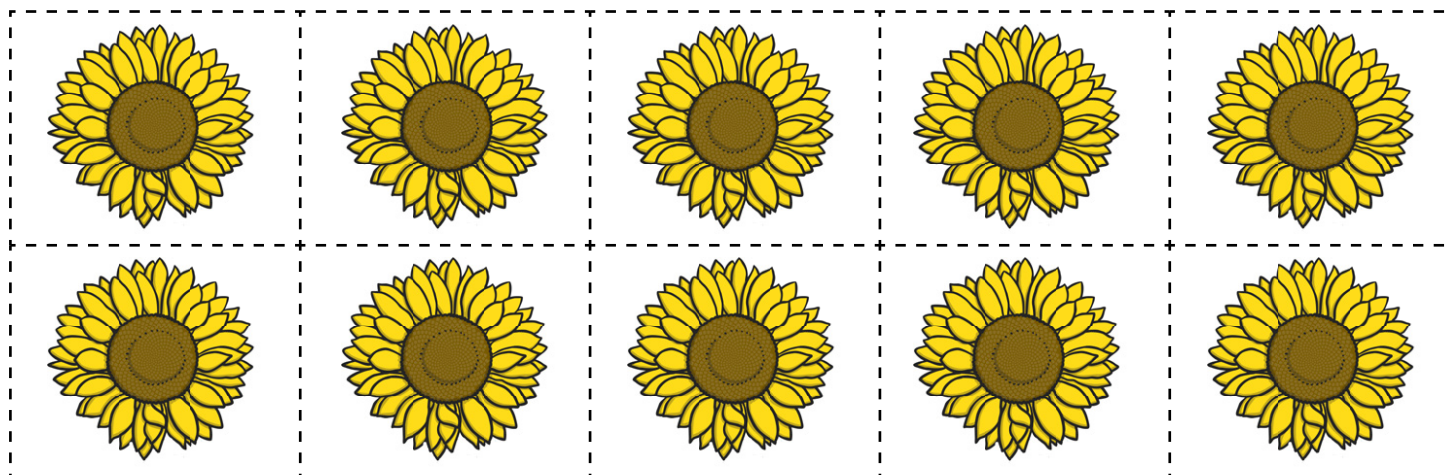
Are there some numbers that don't halve?

Numbers that halve	Numbers that don't halve

What do you notice about your answers?

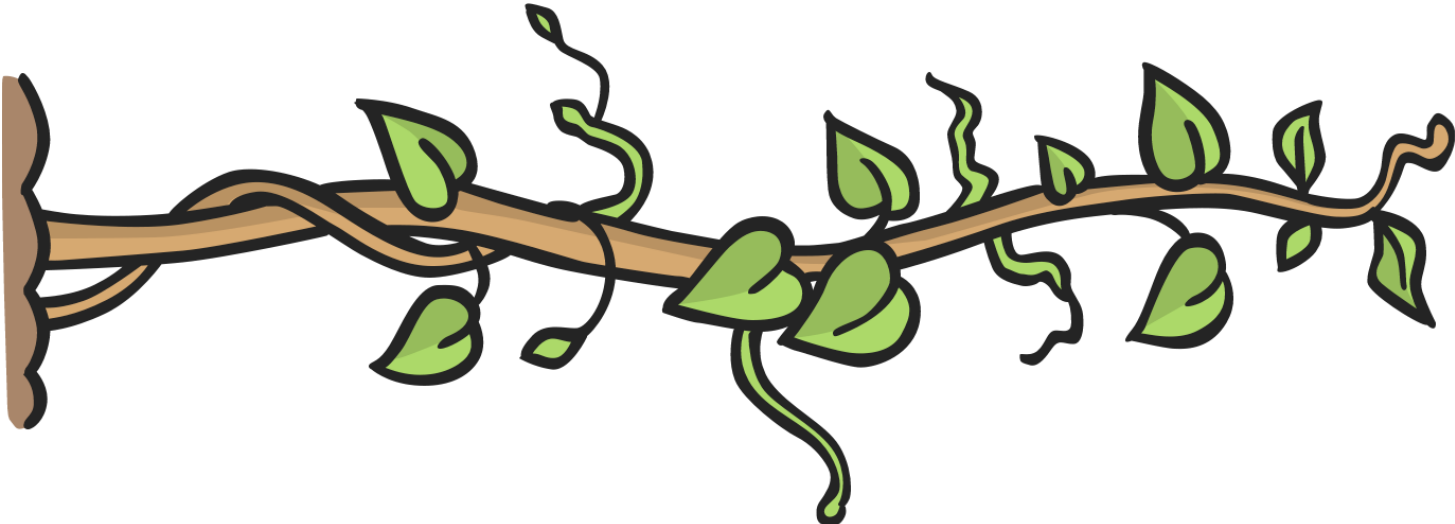
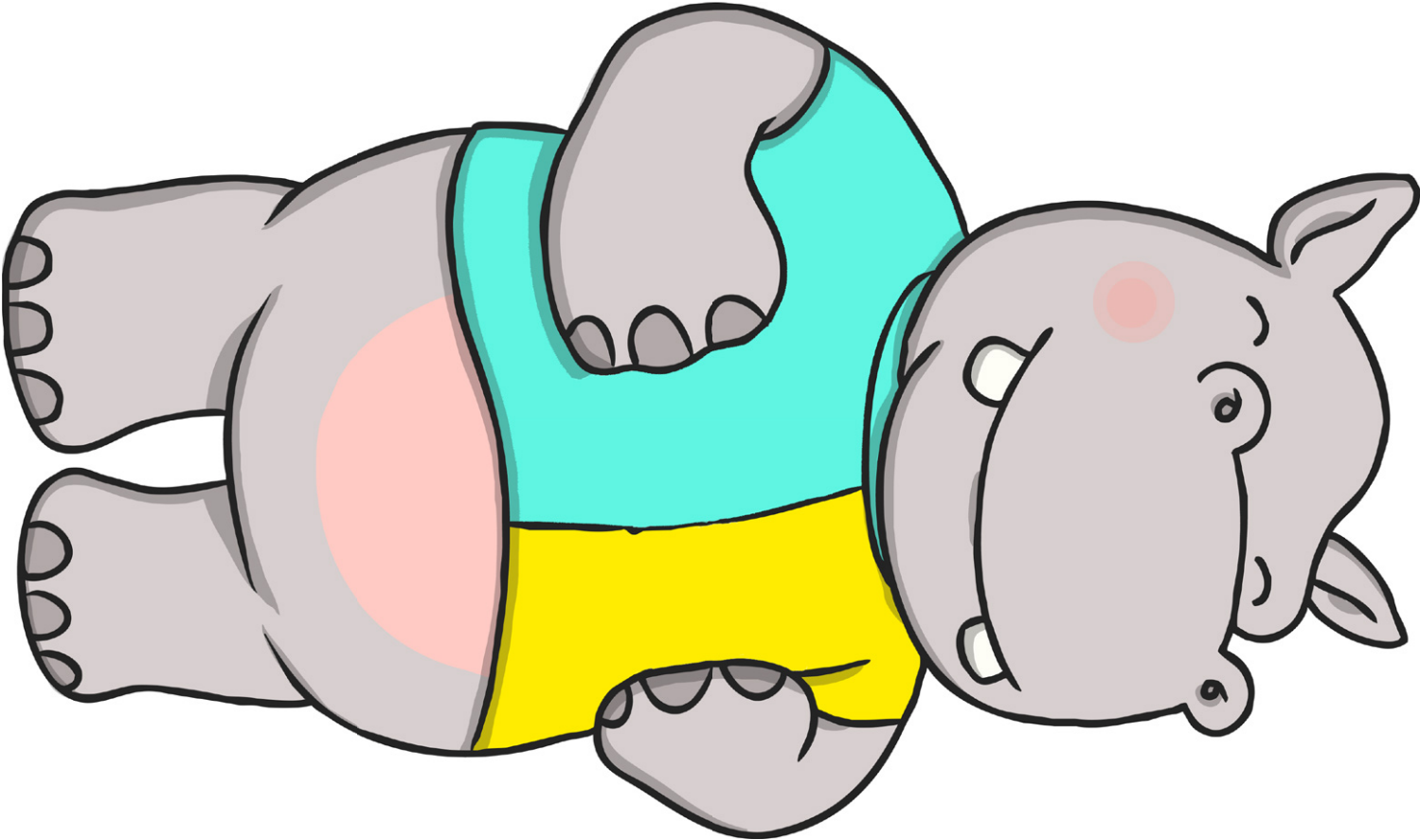
---

---





# Halving Hippo





# Halving Hippo

I can find half of a number.



Halving Hippo eats half of the flowers each time. Explore different numbers of flowers. How many will he eat and how many will be left on the plant?

Are there some numbers that don't halve?

Numbers that halve	Numbers that don't halve

What do you notice about your answers?



Can you make a prediction about other amounts of flowers Halving Hippo would eat?





# Halving Hippo

