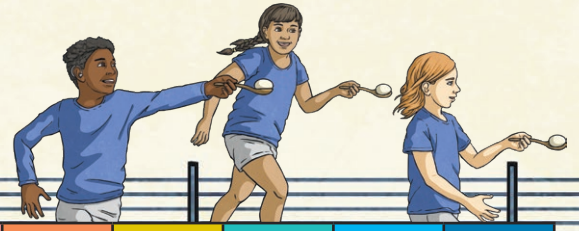


# Sports Day Code Breaker Activity

To find the answers to these hilarious Sports Day jokes, solve the calculations to break the code by matching the answers to the corresponding letter.



A	B	C	D	E	F	G	H	I	J	K	L	M
640	1080	81	2640	204	29	6280	172	41	3644	907	56	103

N	O	P	Q	R	S	T	U	V	W	X	Y	Z
847	2400	8511	37	350	16	2318	93	108	277	419	5438	66

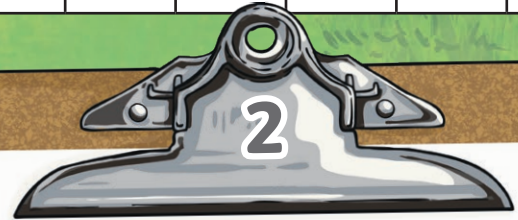


What was the farmer's strongest event?

The \_\_\_\_\_.

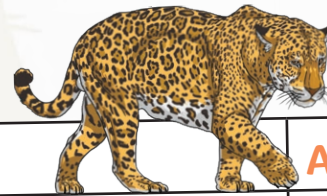


	Answer	Letter
$43 \times 4 =$		
$1020 \div 5 =$		
$216 + 134 =$		
$220 \times 12 =$		
$224 \div 4 =$		
$861 - 657 =$		
$4^2 =$		

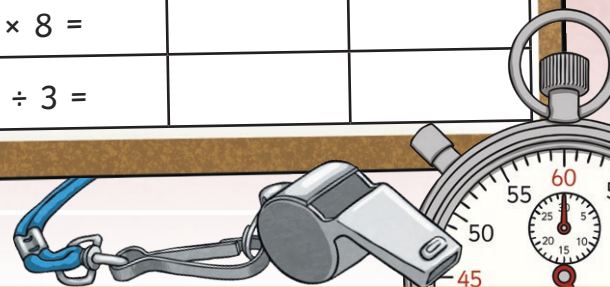


Why did the jaguar lose the sprint race?

They were racing a \_\_\_\_\_.

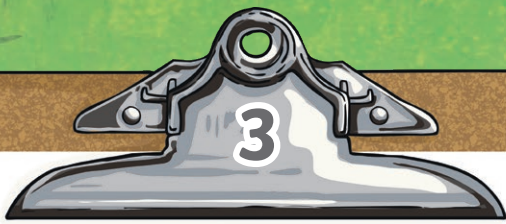


	Answer	Letter
$9^2 =$		
$86 \times 2 =$		
$20400 \div 100 =$		
$51 \times 4 =$		
$1846 + 472 =$		
$80 \times 8 =$		
$516 \div 3 =$		

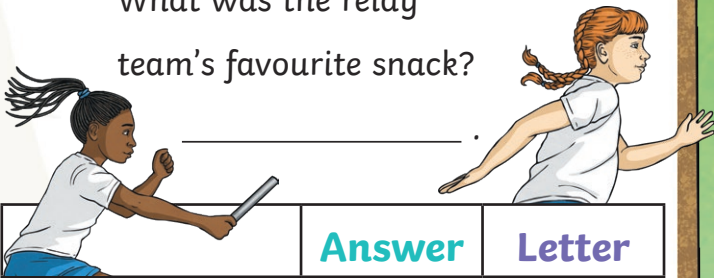


# Year 5 Sports Day Code Breaker Activity

A	B	C	D	E	F	G	H	I	J	K	L	M
640	1080	81	2640	204	29	6280	172	41	3644	907	56	103
N	O	P	Q	R	S	T	U	V	W	X	Y	Z
847	2400	8511	37	350	16	2318	93	108	277	419	5438	66



What was the relay team's favourite snack?

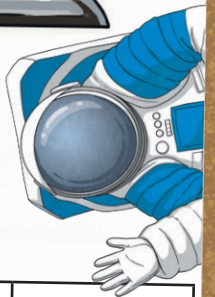


	Answer	Letter
$216 \times 5 =$		
$320 \times 2 =$		
$3067 - 749 =$		
$1589 + 811 =$		
$3388 \div 4 =$		
$613 + 467 =$		
$1224 \div 6 =$		
$25 \times 14 =$		
$628 \times 10 =$		

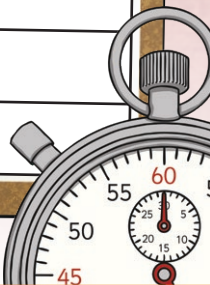


What was the astronaut's favourite sports day event?

The \_\_\_\_\_ race.



	Answer	Letter
$102 \times 2 =$		
$11762 - 5482 =$		
$12560 \div 2 =$		
$435 + 205 =$		
$1014 - 167 =$		
$330 \times 8 =$		
$927 \div 9 =$		
$200 \times 12 =$		
$800 \times 3 =$		
$264 + 583 =$		



# Sports Day Code Breaker Activity Answers

1. What was the farmer's strongest event?

The HERDLES .

	Answer	Letter
$43 \times 4 =$	<b>172</b>	<b>H</b>
$1020 \div 5 =$	<b>204</b>	<b>E</b>
$216 + 134 =$	<b>350</b>	<b>R</b>
$220 \times 12 =$	<b>2640</b>	<b>D</b>
$224 \div 4 =$	<b>56</b>	<b>L</b>
$861 - 657 =$	<b>204</b>	<b>E</b>
$4^2 =$	<b>16</b>	<b>S</b>

3. What was the relay team's favourite snack?

BATONBERG .

	Answer	Letter
$216 \times 5 =$	<b>1080</b>	<b>B</b>
$320 \times 2 =$	<b>640</b>	<b>A</b>
$3067 - 749 =$	<b>2318</b>	<b>T</b>
$1589 + 811 =$	<b>2400</b>	<b>O</b>
$3388 \div 4 =$	<b>847</b>	<b>N</b>
$613 + 467 =$	<b>1080</b>	<b>B</b>
$1224 \div 6 =$	<b>204</b>	<b>E</b>
$25 \times 14 =$	<b>350</b>	<b>R</b>
$628 \times 10 =$	<b>6280</b>	<b>G</b>

2. Why did the jaguar lose the sprint race?  
They were racing a CHEETAH .

	Answer	Letter
$9^2 =$	<b>81</b>	<b>C</b>
$86 \times 2 =$	<b>172</b>	<b>H</b>
$20400 \div 100 =$	<b>204</b>	<b>E</b>
$51 \times 4 =$	<b>204</b>	<b>E</b>
$1846 + 472 =$	<b>2318</b>	<b>T</b>
$80 \times 8 =$	<b>640</b>	<b>A</b>
$516 \div 3 =$	<b>172</b>	<b>H</b>

4. What was the astronaut's favourite sports day event?  
The EGG AND MOON race.

	Answer	Letter
$102 \times 2 =$	<b>204</b>	<b>E</b>
$11762 - 5482 =$	<b>6280</b>	<b>G</b>
$12560 \div 2 =$	<b>6280</b>	<b>G</b>
$435 + 205 =$	<b>640</b>	<b>A</b>
$1014 - 167 =$	<b>847</b>	<b>N</b>
$330 \times 8 =$	<b>2640</b>	<b>D</b>
$927 \div 9 =$	<b>103</b>	<b>M</b>
$200 \times 12 =$	<b>2400</b>	<b>O</b>
$800 \times 3 =$	<b>2400</b>	<b>O</b>
$264 + 583 =$	<b>847</b>	<b>N</b>